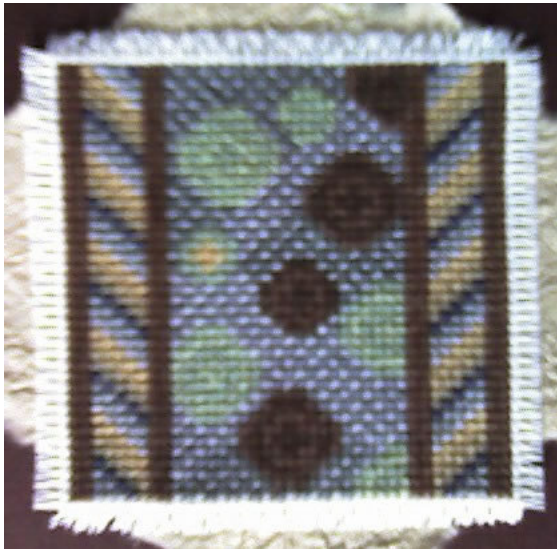


Stormy Mapua Card

Colours from the Coast

I am lucky to live in New Zealand with its abundant coastlines. When I needed to make an abstract cross stitch I headed to the local beaches for inspiration and a colour scheme. The recipient of my work wanted something in a muted colour scheme and he didn't want anything flowery.



Mapua is a seaside village close to my house with pebble beaches and sandy cliffs.

The colours of the sea and the rocks on a stormy day motivated me to try a combination of greys and beiges.

Some seaweed covered rocks provided the green highlights.

I am also a fan of Kaffe Fassett* and wanted to try out some of his suggestions about using closely related colours for added richness and depth.

My trial piece to experiment with the colour scheme has been made into a thank-you card.



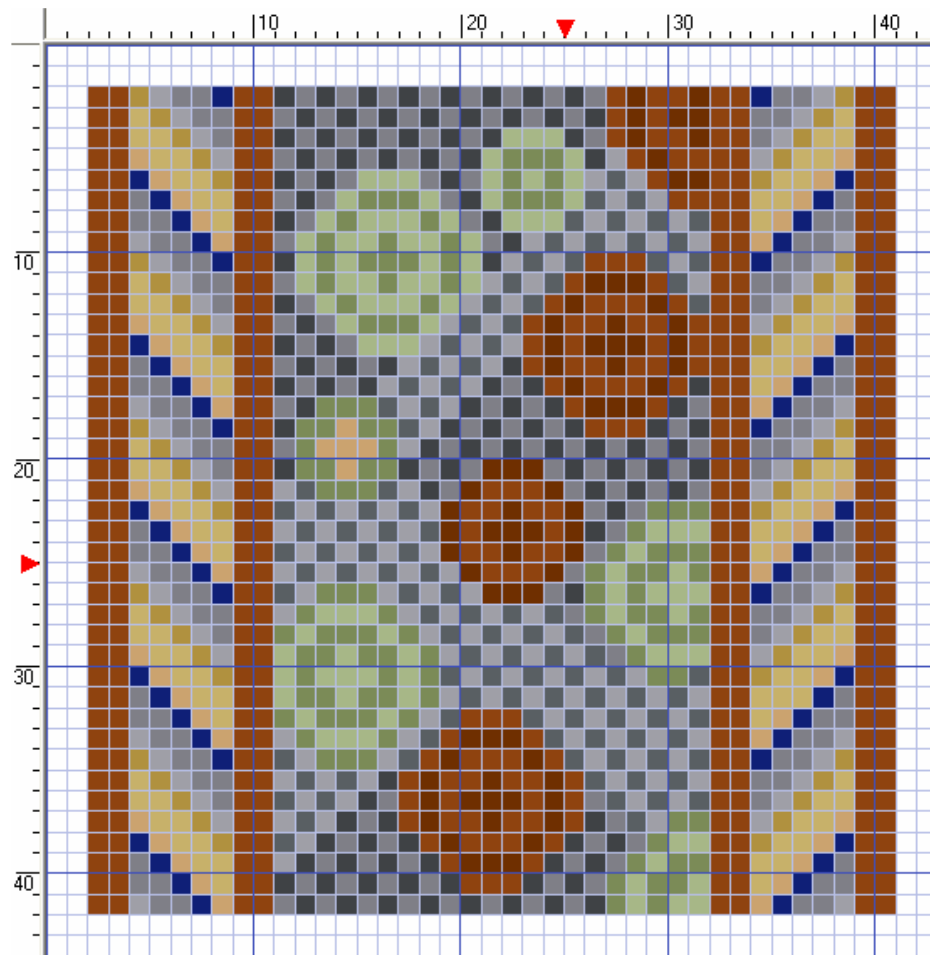
Continued on next page

* See www.kaffefassett.com for details of this wonderful artist

Stormy Mapua Card, *Continued*

Design

Although I am using muted colours, I still wanted to have good coverage and depth of colour, so I used 3 strands of thread for the stitching.



Materials:

DMC #	Colour
437	tan - lt
3045	yellow beige - dk
167	yellow beige - vy dk
400	mahogany - dk
300	mahogany - vy dk
318	steel gray - lt
414	steel gray - dk
3053	green gray
3052	green gray - md
317	pewter gray
413	pewter gray - dk
796	royal blue - dk

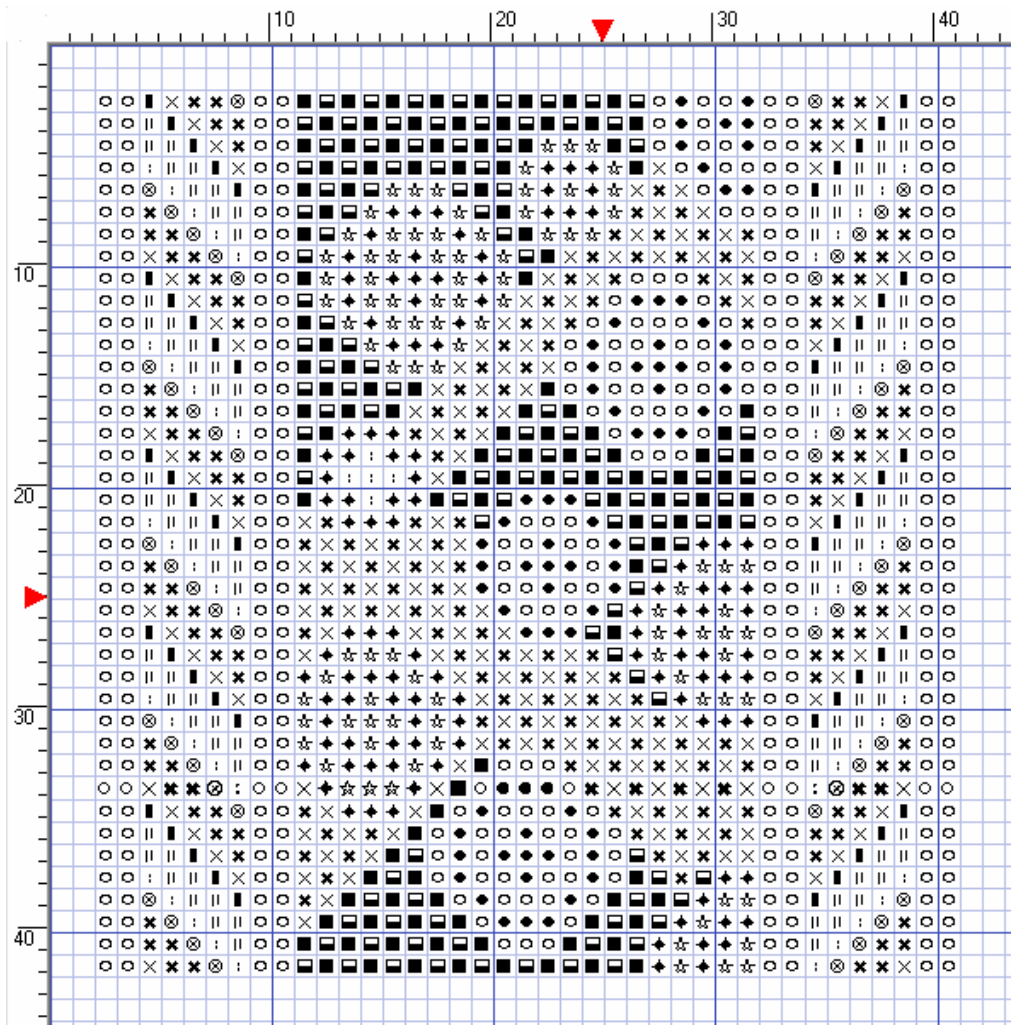
14ct Aida Cloth, white,
15cm (6in) square

Cross stitch using 3 strands of thread
used throughout.

The finished embroidery was simply
trimmed and frayed to make a
fringe. The design could also be used
as an insert for a box.

Stormy Mapua Card, *Continued*

Design in
Symbols



DMC # Colour

- : 437 tan - lt
- || 3045 yellow beige - dk
- 167 yellow beige - vy dk
- 400 mahogany - dk
- 300 mahogany - vy dk
- ☆ 318 steel gray - lt
- ◆ 414 steel gray - dk
- × 3053 green gray
- ✕ 3052 green gray - md
- ◻ 317 pewter gray
- 413 pewter gray - dk
- ⊗ 796 royal blue - dk

14ct Aida Cloth, white,
15cm (6in) square

Cross stitch using 3 strands of
thread used throughout.

The finished embroidery was
simply trimmed and frayed to
make a fringe. The design could
also be used as an insert for a box.